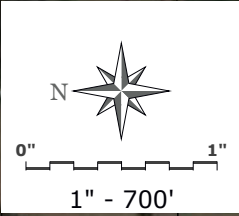
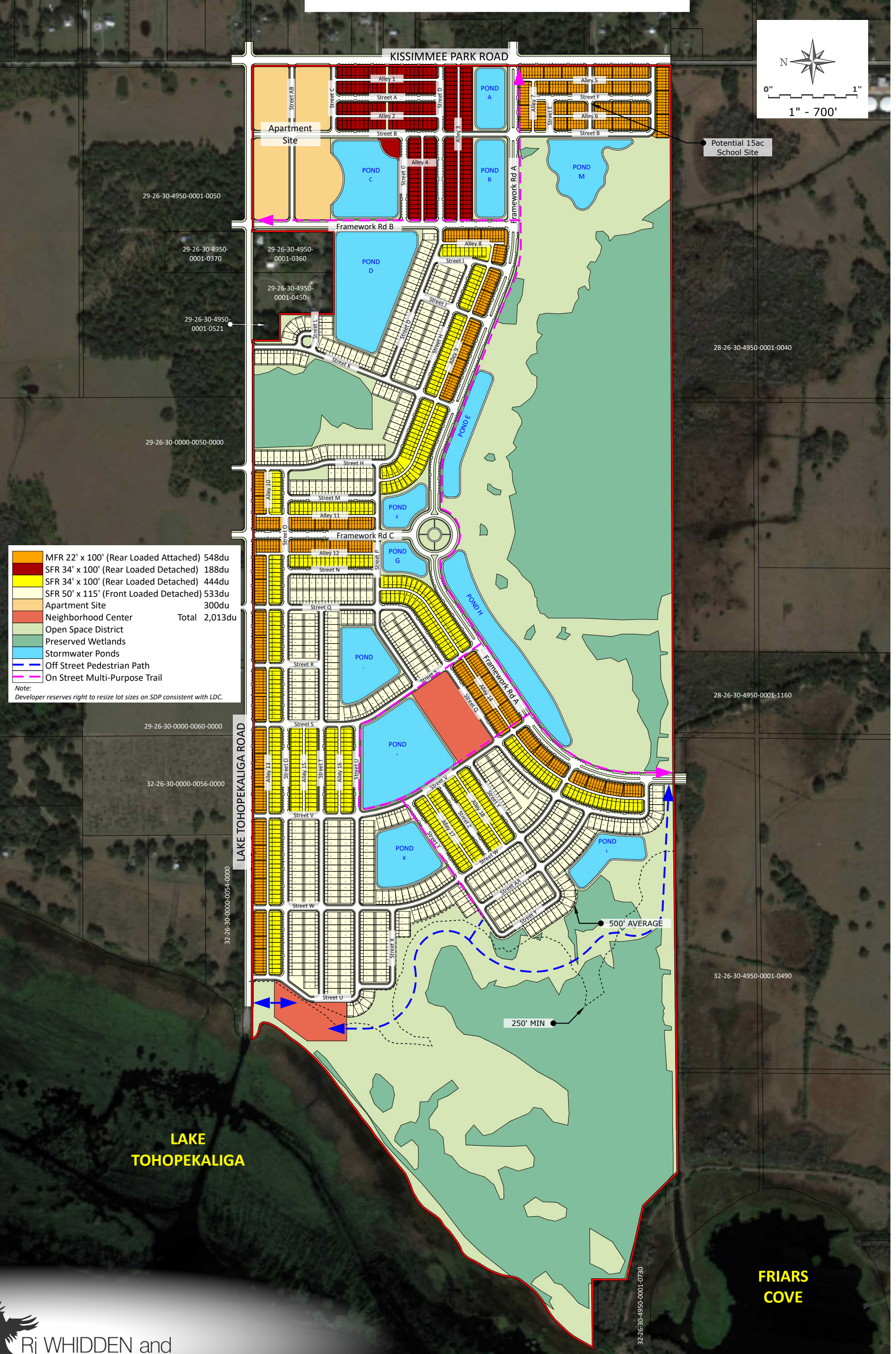


Bellatara

Preliminary Subdivision Plan

Exhibit 5 Preliminary Subdivision Plan (County Approved)



MFR 22' x 100' (Rear Loaded Attached)	548du
SFR 34' x 100' (Rear Loaded Detached)	188du
SFR 34' x 100' (Rear Loaded Detached)	444du
SFR 50' x 115' (Front Loaded Detached)	533du
Apartment Site	300du
Neighborhood Center	Total 2,013du
Open Space District	
Preserved Wetlands	
Stormwater Ponds	
Off Street Pedestrian Path	
On Street Multi-Purpose Trail	

Note:
Developer reserves right to resize lot sizes on SDP consistent with LDC.

**LAKE
TOHOPEKALIGA**

**FRIARS
COVE**



Rj WHIDDEN and ASSOCIATES, INC.

LAND PLANNERS AND DEVELOPMENT CONSULTANTS
316 Church St. Kissimmee, FL. 34741 - 407 846 1880

This preliminary concept was prepared from available information in advance of engineered plans and demonstrates scope, nature and layout of the proposed project. It is subject to refinements for engineering, environmental, architectural, cost effectiveness, marketing, agency review and permit considerations that typically surface as the project evolves from concept to final design. Residential products, if shown, demonstrate product type variety as required by the Land Development Code and are subject to refinements based on final architectural design. Non-residential structures, if shown, are conceptual and will be subject to refinements based on final architectural design. Any landscaping is shown at maturity to demonstrate conceptual massing rather than specificity of species and is subject to requirements of the Land Development Code.